

Toyota Avalon 2019 Model

Product characteristics

The smart electric tailgate is suitable for high-end luxury cars. It has the functions of all-in-hand opening, smart anti-pinching, smart height adjustment, etc. The driver can control the closure of the tailgate switch intelligently and conveniently by pressing the button of the tailgate switch and the key fob of the vehicle remote control. It has the advantages of convenient operation and strong practicability.

Electric tail door function

Easy to Open

The electric tailgate can be controlled not only by the tailgate switch, but also by the electronic key fob.

Smart anti-pinching

When the electric tailgate is used, any obstacles is detected by the sensor. If obstacle is encountered when electric tailgate opens or closes, the tailgate stops running.

Emergency lockout

In the event of an emergency, while the electric tailgate is in the process of being opened or closed, the tailgate can be stopped at any time by the remote control key fob or the tailgate switch of the vehicle.

Height adjustment

The height of the tailgate opening can be adjusted, and the owner can set the final opening height of the tailgate by the manual button according to the usage habit.

Electric Tailgate Lift Installation Manual

Tailgate opening mode:

Control opening and closing of tailgate by pressing key length of trunk remote control Press the button of the original trunk to control the tailgate.

Spare Parts List

Wire harness	Electric pole	2	Double sided adhesive tape	2
Control box	Electric suction lock Assembly	1	Tie strap	1
Switch	Signal adapter	1	Instructions	1
Puncher	Warranty	1	Screw bag	1
Fuse BJ-QDQ-36		1		
Tail Cover Bracket L2, R2				
Car Body Brackets L3, R3				



1. Press once on the instrument to carry out control of tailgate opening and closing



2. Remove all the clasps on the tail cover. Remove tail cover trim



3. Take out the floor of the trunk



4. Take out the trunk toolbox



5. Remove the clasps and pull up the plastic material panel.



6. Remove the trunk left and right panel



7. Remove left and right clasps and remove the plastic case



8. Remove the left and right springs, and the assistant needs to hold the tail trunk cover before removing.



9. Remove the plastic clasps at the back hook spring



10. Remove the original car recoil rod and bracket and do not put it back



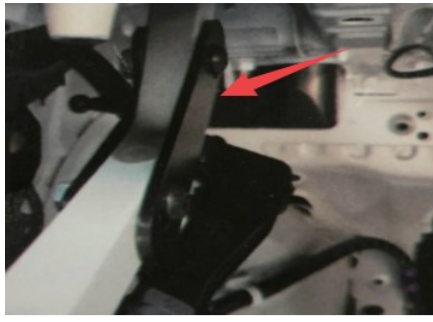
11. Install the rear body bracket, the left and right mounting method is the same, L is left, R is right



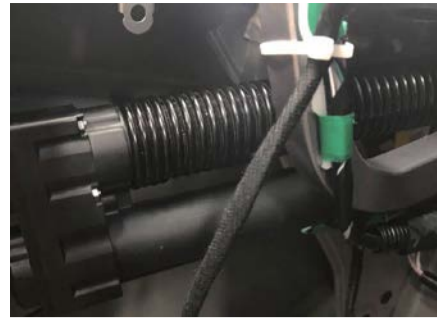
12. Remove the left front original tail cover hook spring bracket



13. Remove the original car fixing wire plastic casing



14. Install the left tail cover bracket, symmetrical mounting, L is left, R is right



15. As shown in the figure, install the electric pole. L is left, R is right



16. Remove the original car lock



17. Install the electric suction lock assembly, adjust the up and down to the best position, tighten the screws



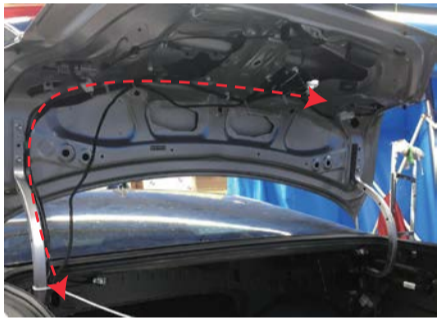
18. Electric suction lock assembly is fixed along the left side



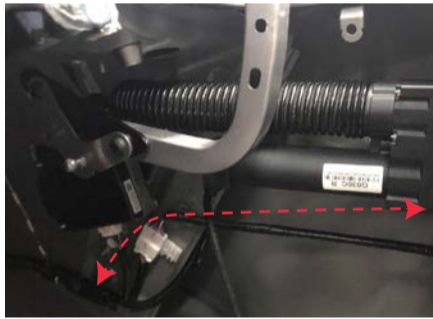
19. Electric suction lock motor is fixed with adhesive



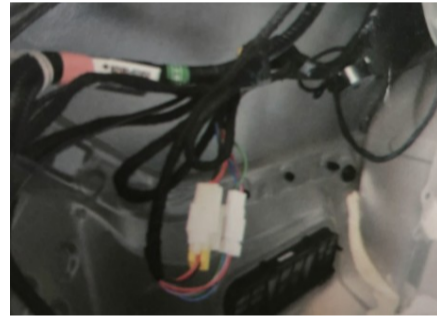
20. The negative pole of the power supply is placed on the left side of the original car.



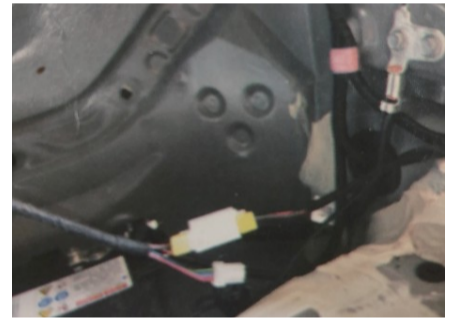
21. Move the signal wire and switch wire along the left side to the tail cover.



22. The wire must be routed according to the original car wire



23. Left side electric pole wire connect to harness 2P and 4P socket



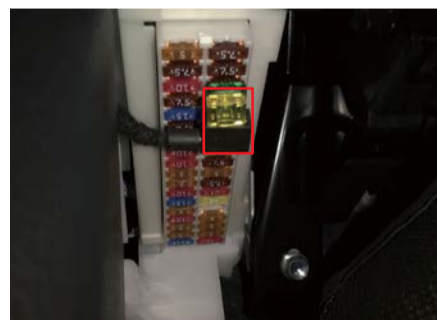
24. Connect right electric pole 2P to wiring harness 2P. No insertion for electric pole 4P.



25. The red signal cable is connected to the original lock purple color block plug, orange connect to gray, or with the provided non-breaking wire adapter wiring



26. The positive pole of the power supply goes along the left side of the trunk to the underside of the driving instrument.



27. Open the fuse cover under the front of the instrument and find the fifth hole on the right.



28. Insert the special fuse as shown in figure. Tighten up.



29. Controller fixed on the left side of the trunk



30. The tailgate closing button is fixed on the right side of the tail cover



31. After installation, please check the cable tie strap is tied to the plastic case.

Remarks: After installation, you must manually close it once and then open it, that is, the installation is complete.

Disclaimer: Due to improper installation and improper use, the related problems and losses are not covered by our company's warranty.