

17 new audi A4L installation instructions



1. According to the arrow position to take out the trunk base plate



2. According to the arrow apart apart screw, remove them



3. At the handle position the screws out, remove the plaque



4. Pull on the right side of the plaques



6. Unlock button remove the plaque



7. Installed as shown our poles tail



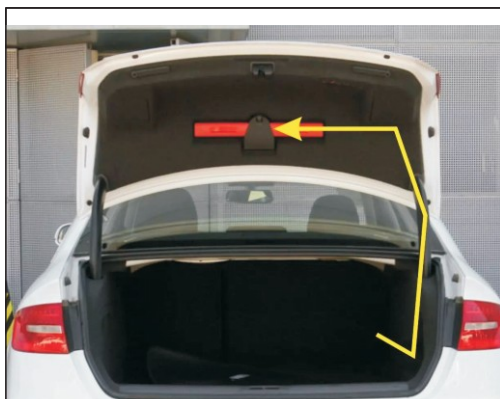
8. Installed as shown our ball head and brace



9. Strut installation is complete



10. Power supply for electricity as shown



11. Hall line go line poles as shown



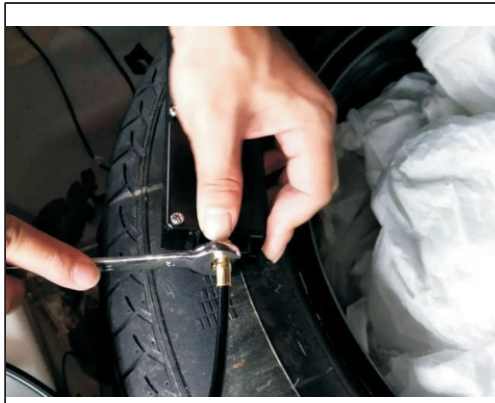
12. Remove the original lock button as shown in figure, the installation our electric lock



13. Remove the screw motor, place the drawing as shown on the motor



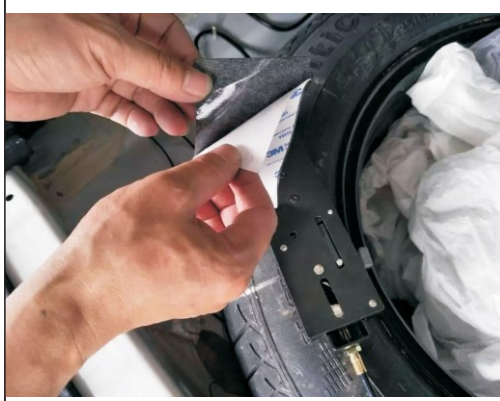
14. Use screws to pull on the rope and motor as shown



15. To use the original machine screws, with wrench screw



16. The electrical socket to plug in the suction line socket



17. Will our company with 3 m glue stick on the back of the motor



18. In the tail door trim stiletto installation we stern door switch